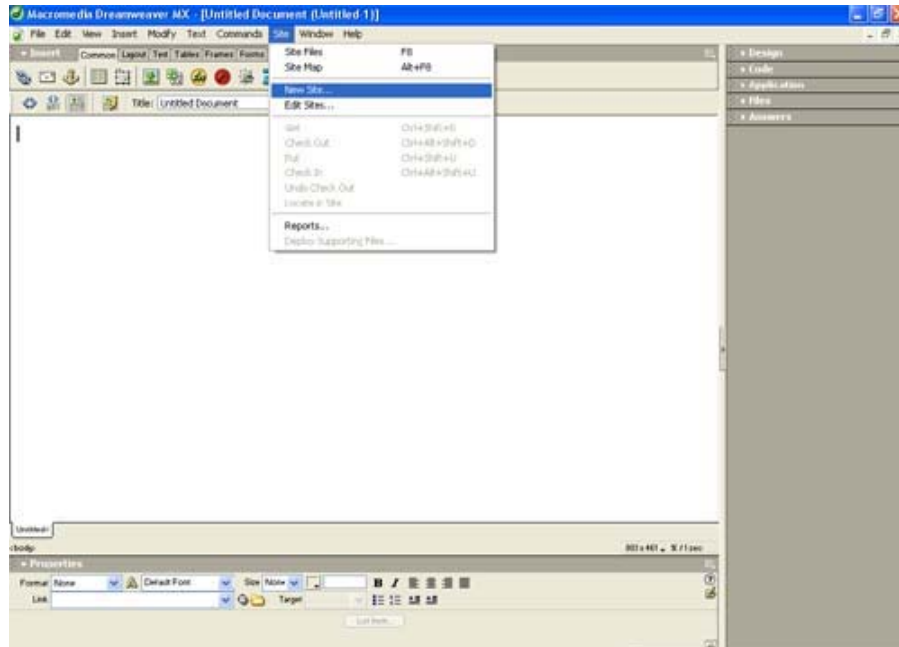
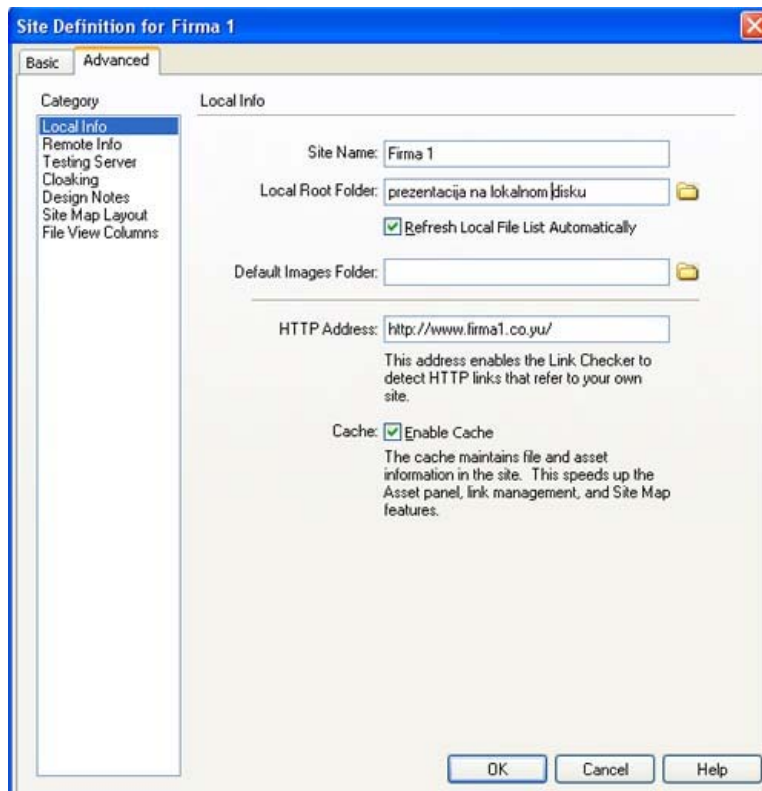


# UPUTSTVO ZA PODEŠAVANJE FTP KONEKCIJE (ZA MACROMEDIA DREAMWEAVER)

1 U prvom koraku potrebno je da definišete novi sajt **Site > New Site**



2 U drugom koraku - **Local info** - je potrebno da definišete ime vašeg sajta, mesto gde se nalazi u lokalu na vašem disku i HTTP adresu.



3 U trećem koraku - **Remote info** - je potrebno definisati parametre FTP konekcije koje uključuju ime našeg servera i parametre za logovanje koje dobijate od nas. Takođe možete u opciji -**Test** - proveriti da li je vaša konfiguracija ispravna.

The image shows a screenshot of a software dialog box titled "Site Definition for Firma 1". The dialog has two tabs: "Basic" and "Advanced". The "Advanced" tab is selected, and within it, the "Remote Info" category is active. On the left side, there is a list of categories: "Local Info", "Remote Info" (highlighted), "Testing Server", "Cloaking", "Design Notes", "Site Map Layout", and "File View Columns". The main area of the dialog is titled "Remote Info" and contains the following fields and options:

- Access:** A dropdown menu set to "FTP".
- FTP Host:** A text input field containing "ftp.ravangrad.net".
- Host Directory:** An empty text input field.
- Login:** A text input field containing "korisnicko ime". To its right is a "Test" button.
- Password:** A text input field containing "lozinka". To its right is a "Save" checkbox.
- Use Passive FTP:** An unchecked checkbox.
- Use Firewall:** An unchecked checkbox. To its right is a "Firewall Settings..." button.
- Use SSH encrypted secure login:** An unchecked checkbox.
- Automatically upload files to server on save:** An unchecked checkbox.
- Check In/Out:** An unchecked checkbox labeled "Enable File Check In and Check Out".

At the bottom right of the dialog, there are three buttons: "OK", "Cancel", and "Help".